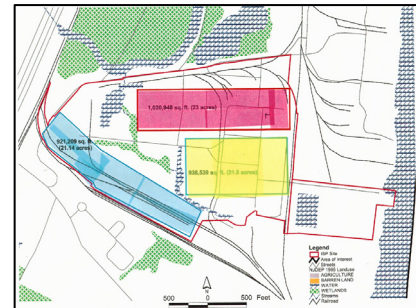


## POTENTIAL FOR A GLOBAL FREIGHT VILLAGE IN THE TREMLEY POINT AREA, LINDEN, NEW JERSEY

The City of Linden and Union County, New Jersey saw great potential in the redevelopment of a long-abandoned industrial site within the City. The area has rail and water access, is very close to the New Jersey Turnpike and has access to the Newark Bay for deep-water vessels. In addition the site is minutes from the Linden Airport and a few miles away from the air cargo operations at Newark Liberty International Airport.

A consulting team, led by Planners Diversified, included Dr. Ernest Swiger, the engineering firm of Camp Dresser and McKee, and Dr. Gerhard Muller, an intermodal expert. The team was charged with evaluating the potential of establishing a Global Freight Village, an integrated system of logistics and multi-modal transport services designed to facilitate the movement of freight. The concept originated in Europe and can incorporate highway, rail, waterway or air transport operations.

The team carefully examined a hypothetical site in the area and, allowing for wetlands, existing rail lines and certain other features concluded that the site was well suited for this type of use, given its proximity to rail, highway, water and air transport operations in particular. Sample layouts, including “big box” warehouses and PUD-type facilities, were modeled on the site. The sketch to the right shows the “big box” model placed on the site. The team recommended that the County and the City pursue development along the GFV model.



The County has moved forward with the concept. The New Jersey Turnpike Authority is developing plans for a new truck-only exit and entrance for the site, and the City has moved to declare the area one in need of redevelopment, a first step toward stimulating development activity.